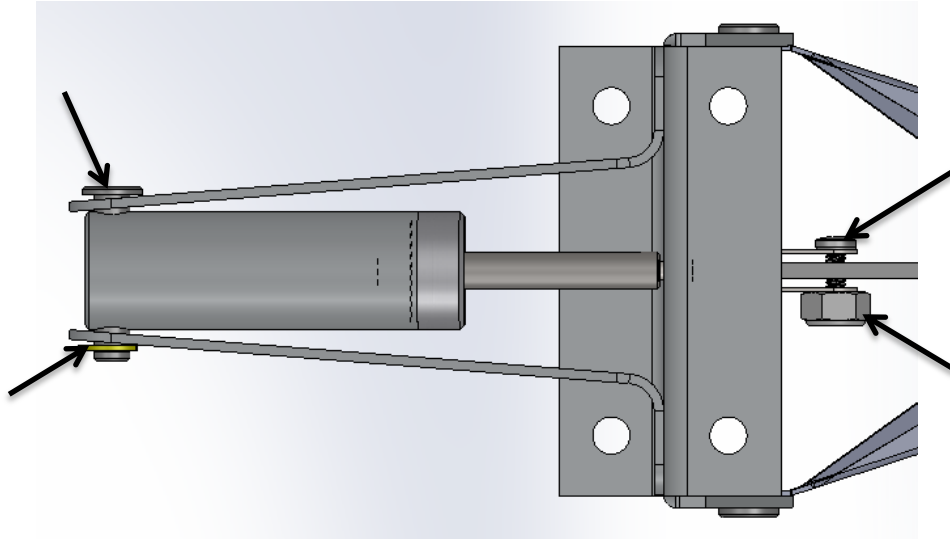
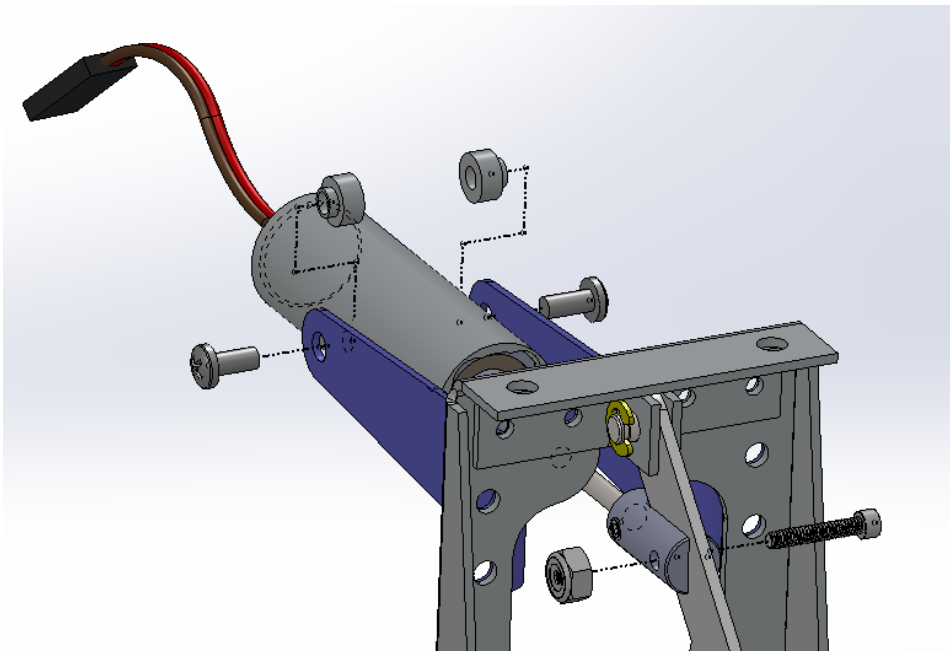


160C Actuator Conversion Instructions



- 1) Remove cylinder by disassembling retaining clip and pulling out the clevis pin that holds the cylinder to the mounting brackets. Then remove the machine screw and nut that holds the rod end to the retract linkage. The cylinder should drop out freely.

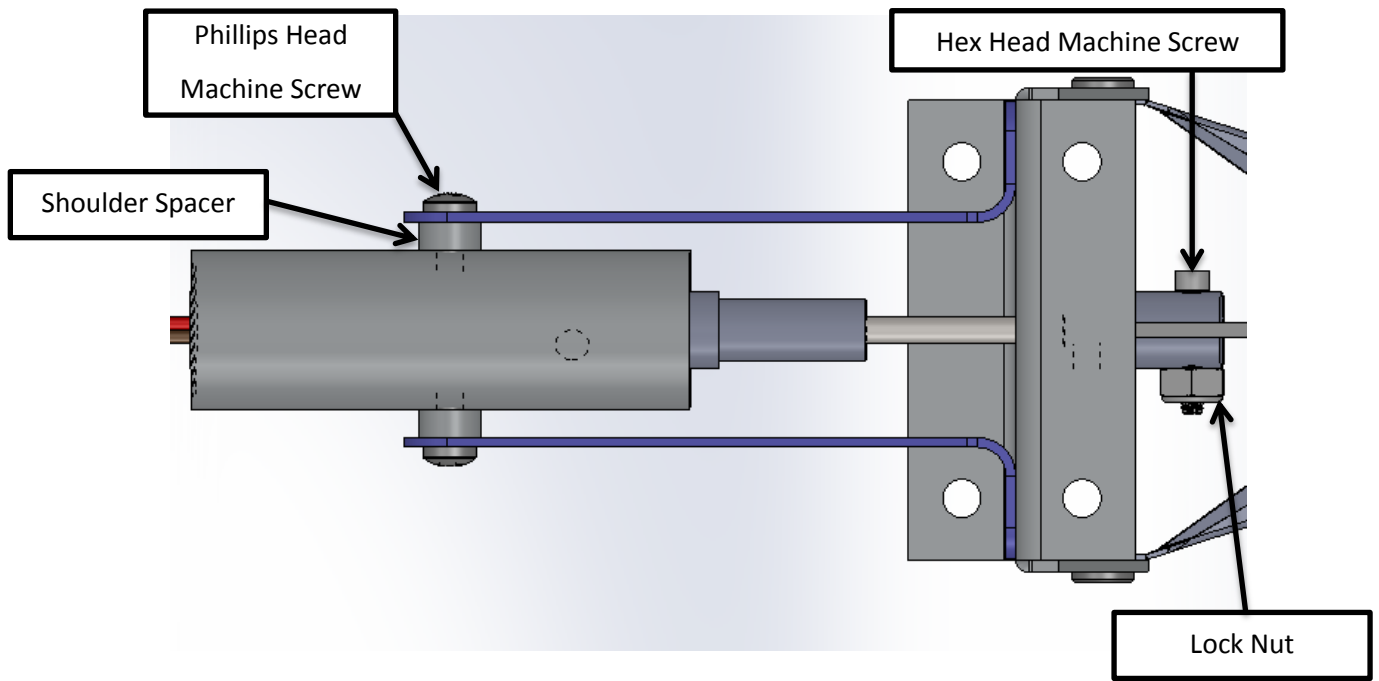


- 2) Place shoulder spacer with smaller diameter shoulder into the hole in the mounting bracket as shown. Apply threadlocker to screw and thread into actuator housing until tight. Bracket will flex slightly as screws are tightened. Repeat for opposite side. Actuator should be snug but still able to pivot. Thread the cap screw into the aluminum rod end and attach lock nut as shown above. The actuator may need to be threaded in or out by hand to allow for proper alignment.

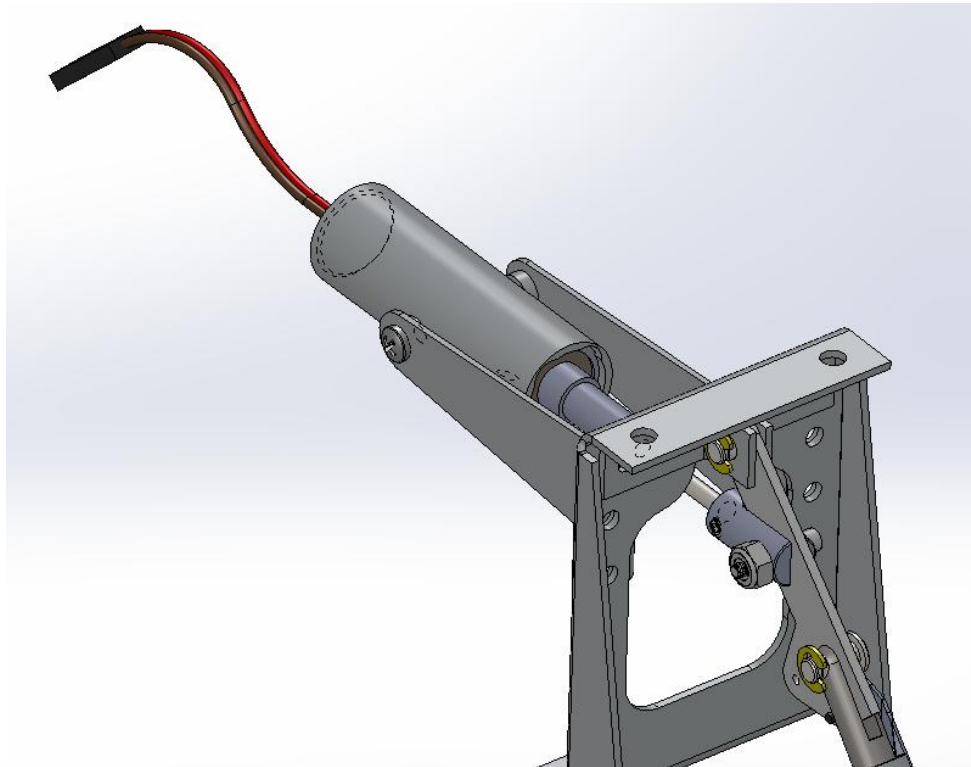
robart mfg

625 N. 12th St., St. Charles, IL 60174

PH: 630-584-7616



3) With all parts re-assembled as shown above, the conversion is complete.



robart mfg

625 N. 12th St., St. Charles, IL 60174

PH: 630-584-7616